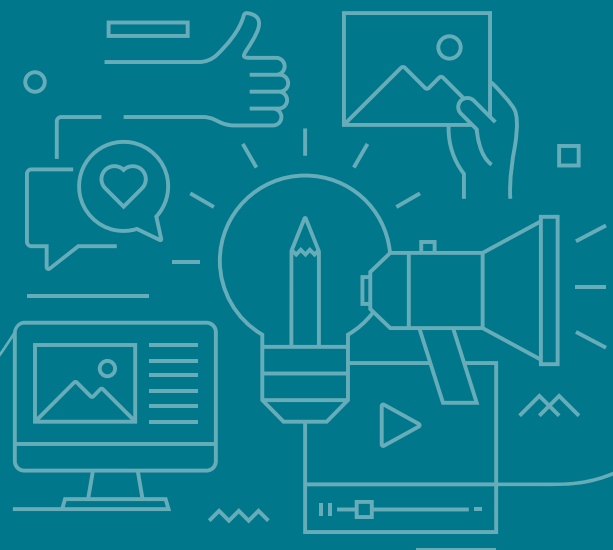


How the ASHA Convention Program Committee Works Together



The Team



ASHA STAFF *Event Planning and Oversight*

ASHA Staff are responsible for overall event management of the ASHA Convention and provide guidance and support to the Convention Program Committee, ensuring adherence to policies and timelines.

- Experience design and logistics implementation
- Budget oversight
- Vendor management
- Onsite event management



Convention Program Committee *Education Program Development*

The Convention Program Committee (CPC) is the member volunteer entity responsible for the scientific professional education program.

- Serve as subject matter experts in communication sciences and disorders
- Invite presenters to deliver sessions on special topics
- Select and schedule sessions submitted through the Call for Paper

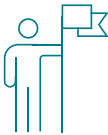
Convention Program Committee Structure and Roles

Co-Chairs (2 year term)



The two **Co-Chairs**, one representing audiology and one representing speech-language pathology, **lead the CPC and guide the Topic Chairs** through the Call for Papers review and selection process for the education program.

Topic Chairs (1 year term)

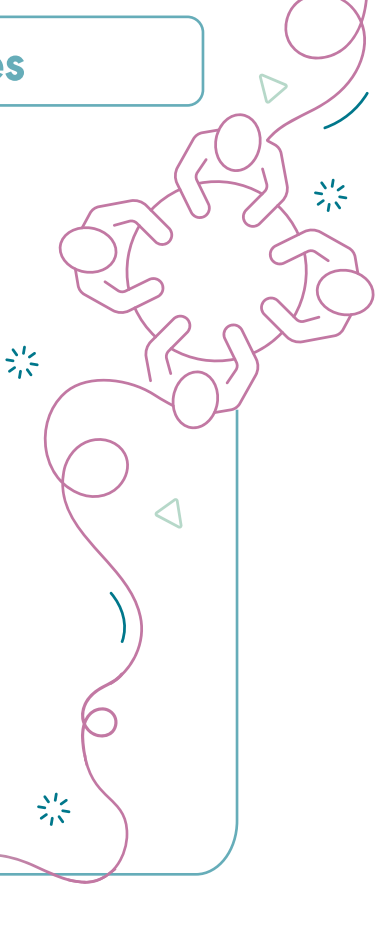


Topic Chairs recruit Reviewers, lead them in reviewing proposals submitted through the Call for Papers, and invite special presenters to deliver presentations.

Reviewers (6 month term)



Reviewers evaluate presentation proposals submitted through the Call for Papers, ensuring content quality and relevance to their topic area.



The two **Local Hosts** are appointed by the State Association to support the development of the Pre-Convention Workshops and to assist with any location-specific initiatives.



LEARN MORE about the Convention Program Committee and how you can get involved.



ASHA
American
Speech-Language-Hearing
Association